



GAT MONTHLY MEMBERSHIP PROGRESS REPORT

Results as of: 4/30/2022

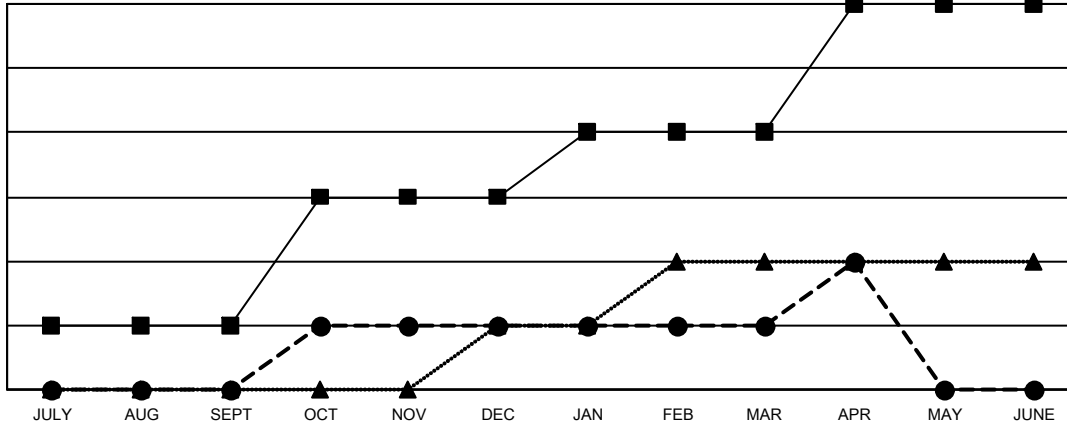
Multiple District 16

LOCATION: NEW JERSEY

Clubs			
RESULTS FOR 2021-2022			
QUARTER	NEW CLUB GOAL	NEW CLUBS	DROPPED CLUBS
JULY/AUG/SEPT	1	0	2
OCT/NOV/DEC	2	1	3
JAN/FEB/MAR	1	0	0
APR/MAY/JUNE	2	1	0

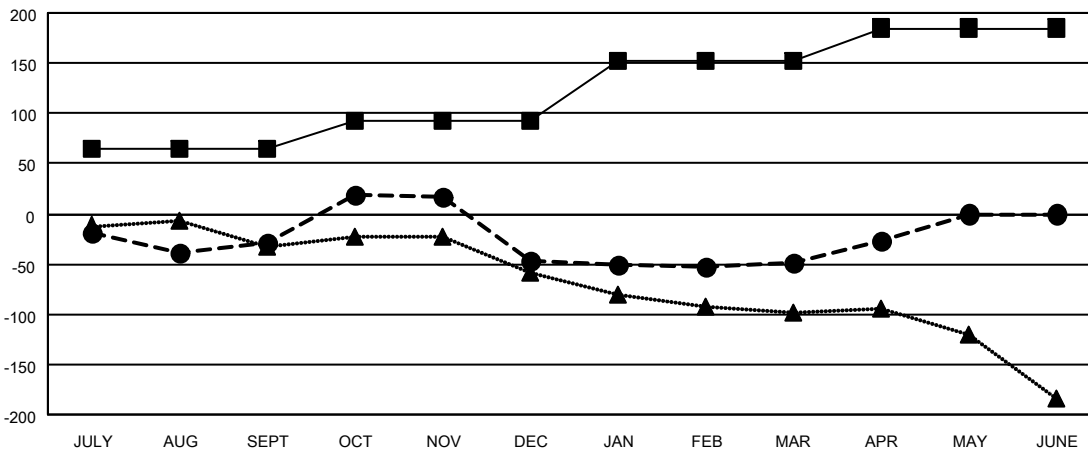
Members			
RESULTS FOR 2021-2022			
QUARTER	MEMBER GROWTH NET GOAL	MEMBER GROWTH ACTUAL	DROPPED MEMBERS ACTUAL (including transfers)
JULY/AUG/SEPT	65	97	112
OCT/NOV/DEC	28	106	122
JAN/FEB/MAR	60	101	73
APR/MAY/JUNE	32	47	24

GOALS AND ACTUAL NEW CLUBS CUMULATIVE



- - CURRENT YEAR GOALS FOR NEW CLUBS
- - CURRENT YEAR ACTUAL NEW CLUBS
- ▲ - LAST YEAR ACTUAL NEW CLUBS

GOALS AND ACTUAL MEMBERS CUMULATIVE



- - MEMBER GROWTH NET GOAL
- - MEMBER GROWTH ACTUAL
- ▲ - LAST YEAR MEMBERSHIP ACTUAL

DROPPED CLUBS: 5	69 CLUBS OF 173 ADDED 1 OR MORE NEW MEMBERS	GENDER DISTRIBUTION
DROPPED MEMBERS	CLICK HERE FOR CUMULATIVE MEMBERSHIP DATA	MALE 2,650 (64.81%)
DECEASED 35		FEMALE 1,425 (34.85%)
CLUB CANCELLED 42		NON BINARY 2 (0.05%)
OTHER 254		PREFER NOT TO ANSWER 12 (0.29%)
TOTAL 331		TOTAL FAMILY UNIT MEMBERS 736
		FAMILY MEMBERS PAYING HALF DUES 385